



Specifications For Manufactured Materials

Section: FLASHING LIGHT

Subject: SPECIFICATION FOR PRECAST BASES

1. INTRODUCTION

This specification describes the requirements for precast concrete bases used by Saskatchewan Highways and Transportation to mount traffic signal light standards.

2. REQUIREMENTS

Refer to figures 1510-3-1 for diagrams of the precast concrete base.

2.1. Concrete

The concrete shall attain a minimum 28 days compressive strength equal to or greater than 20 MPa, and shall have $5.5 \pm 1\%$ entrained air content.

- The bottom of the concrete base shall be vibrated to ensure uniform concrete flow.
- The top of the concrete base shall be finished smooth.

2.2. Anchor Bolts and Ties

- Anchor rods shall be fabricated from deformed rebar conforming to CSA Standard G30.12M, Grade 400.
- Only the top 300 mm of the anchor rods are required to be galvanized.
- Galvanizing shall conform to CSA Standard G164.
- The circular ties shall be deformed reinforcing steel conforming to the requirements of CSA Standard G30.13M, Grade 300.

3. GENERAL CONDITIONS

3.1. Acceptance of Concrete Bases

All shipments of precast concrete bases are subject to inspection by the Department of Highway and Transportation when they are received. Acceptance will be based on the requirements of this specification. Inspection by the Department of Highways and

Section:

FLASHING LIGHT

Subject:

SPECIFICATION FOR PRECAST BASES

Transportation does not relieve the manufacturer of his obligation to ensure quality and that the requirements of this specification are met.

3.2. Rejection of Concrete Bases

Failure of a representative of any shipment to meet the requirements of this specification shall be basis for rejection of the shipment.

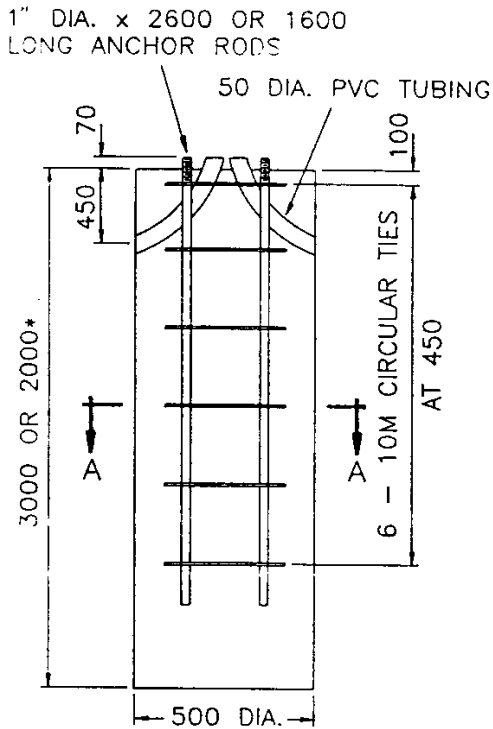
Specifications For Manufactured Materials

SMM 1510-3

Section:
FLASHING LIGHT

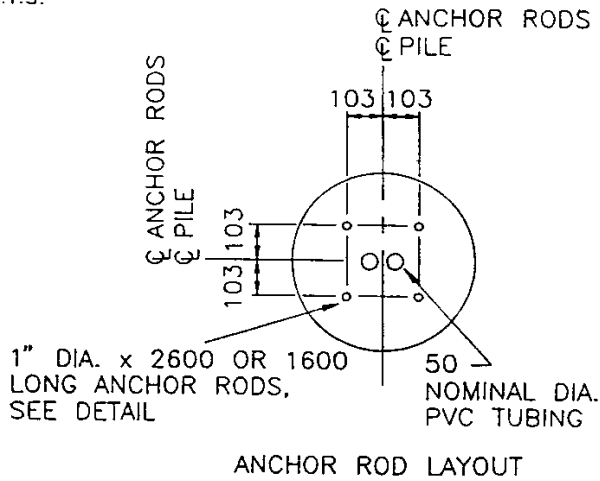
Subject:
SPECIFICATION FOR PRECAST BASES

PRECAST BASE N.T.S.

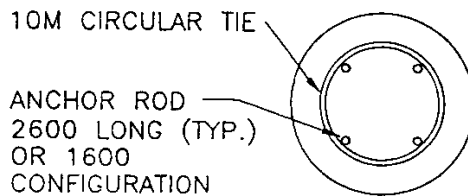


- * 3000 FOR DAVIT POLE
- * 2000 FOR 3.5 METRE PEDESTAL POLE.

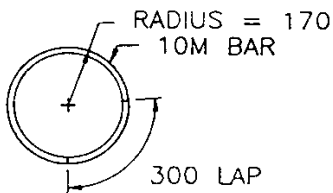
FOUNDATION DETAIL



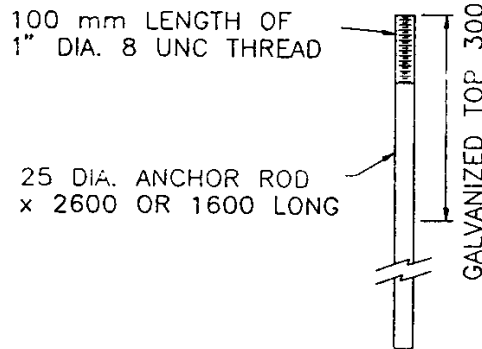
ANCHOR ROD LAYOUT



SECTION A - A



CIRCULAR TIE DETAIL



ANCHOR ROD DETAIL

ALL DIMENSIONS ARE IN mm
UNLESS OTHERWISE SPECIFIED

Section:

FLASHING LIGHT

Subject:

SPECIFICATION FOR PRECAST BASES

APPROVAL SHEET

New X Revision ___ Date of Previous DocumentEffective Date: 93-09-03

Description of Revision (Reason for Revision):

Developed by Jon Wyatt, to be included into the SMM Manual.

Review/Implementation Process:

Other Manuals/Policies Affected:

Follow Up/Training Required:

Comments/Concerns/Implications (Budget/Environment/Stakeholders):

Prepared and Recommended by: Randy Schmidt 93-02-08
Materials Standards Engineer DateApproval Recommended by: R.A. Widger 93-08-24
Senior Materials Engineer DateApproval Recommended by: A.R. Gerbrandt 93-09-02
Dir., Tech. Std. & Policies Br. DateApproved by: D.G. Metz 93-09-03
Assistant Deputy Minister, Infrastructure DateElectronic File Updated 93-09-21
Update Mailed - -